

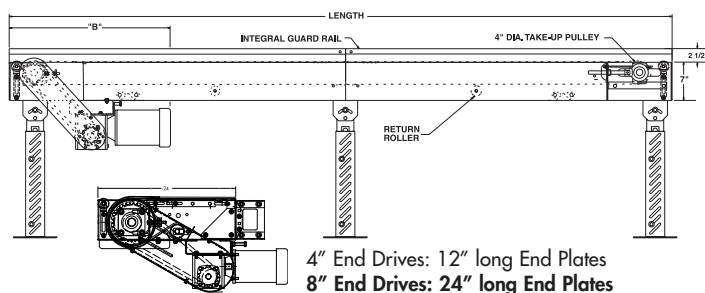
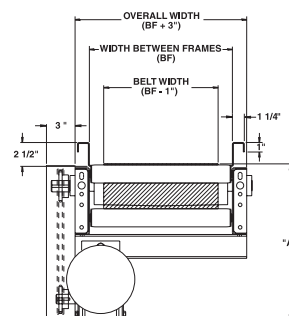
# MODEL 725TB TROUGH BED BELT CONVEYOR

24 HOUR SHIPMENTS INCLUDE ALL 1-FOOT INCREMENTS 5'-0" TO 100'-0"



Conveyor shown with optional supports

725TB trough bed belt conveyor is ideal for handling chips, slugs, scrap wood, paper waste, boxes, packages and cartons. The troughed frame design offers integral guard rails for many trash conveyor applications.



| HP@<br>60 FPM | "A" MAX |         | "B" MAX   |           |
|---------------|---------|---------|-----------|-----------|
|               | 4" DRV. | 8" DRV. | 4" DRV.   | 8" DRV.   |
| 1/3           | 16-5/8" | 16-5/8" | 27-3/32"  | 33-3/32"  |
| 1/2           | 16-5/8" | 16-5/8" | 27-3/32"  | 33-3/32"  |
| 3/4           | 17"     | 17"     | 27-23/32" | 33-23/32" |
| 1             | 17-1/4" | 17-1/4" | 28-15/32" | 34-15/32" |
| 1-1/2         | 18-1/8" | 18-1/8" | 31-3/32"  | 37-3/32"  |
| 2             | 19"     | 19"     | 32-3/32"  | 38-3/32"  |

## SPECIFICATIONS

**BELTING:** PVC-120 black.

**DRIVE PULLEY:** 4" dia. with 1-3/16" dia. shaft or 8" dia. with 1-7/16" dia. shaft, both machine crowned and fully lagged.

**TAIL PULLEY:** 4" dia., machine crowned, with 1-3/16" dia. shaft.

**END DRIVE:** Allows one-direction (unit) operation; add optional center drive for reversible application.

**TAKE-UP:** Screw type unit at tail pulley provides 12" belt take-up.

**SAFETY POP-OUT ROLLER:** Standard on both ends, 1.9" dia. x 16 ga. steel roller, model 196S.

**BEARINGS:** All pulley bearings are precision, heavy duty, lubricated, ball bearing units with cast iron housings.

**BED:** 7" deep x 12 ga. box type bed with bed pan braces (all widths) and with 2-1/2" deep x 12 ga. formed trough with formed flanges on sides to provide extra strength.

**MOTOR DRIVE:** 1/3 HP, 230/460/3, 60 cycle, ODP right angle gear motor.

**ROLLER CHAIN:** Drive pulley is driven by No. 50 roller chain for 1-1/2 HP or less and No. 60 chain on larger drives. Chain take-up provided on motor base.

**RETURN ROLLERS:** 1.9" dia. 16 ga. steel, model 196S, adjustable.

**BELT SPEED:** 60 FPM, constant.

**ELECTRICAL CONTROLS:** Optional.

## ⚠ WARNING

Prevent pinch points that exist when belt conveyors are permanently attached to other conveyors or equipment!



# SPECIFICATION TABLE

50'-0" lengths and under are equipped with 4" dia. drive pulley; over 50'-0" includes 8" dia. drive pulley

■ 24 hour shipment ■ 2 week shipment

| CONVEYOR LENGTH |     | 10'                 | 20' | 30'  | 40'  | 50'  | 60'  | 70'  | 80'  | 90'  | 100' | DEDUCT   |
|-----------------|-----|---------------------|-----|------|------|------|------|------|------|------|------|----------|
| BELT            | BED | UNIT WEIGHTS (lbs.) |     |      |      |      |      |      |      |      |      | PER FOOT |
| 6"              | 7"  | 305                 | 477 | 649  | 821  | 993  | 1166 | 1338 | 1510 | 1682 | 1854 | 17       |
| 12"             | 13" | 360                 | 569 | 778  | 988  | 1197 | 1406 | 1615 | 1825 | 2034 | 2243 | 21       |
| 18"             | 19" | 415                 | 661 | 907  | 1154 | 1400 | 1646 | 1893 | 2139 | 2386 | 2632 | 25       |
| 24"             | 25" | 469                 | 753 | 1036 | 1320 | 1603 | 1887 | 2170 | 2454 | 2737 | 3021 | 28       |
| 30"             | 31" | 524                 | 845 | 1165 | 1486 | 1807 | 2127 | 2448 | 2769 | 3089 | 3410 | 32       |
| 36"             | 37" | 579                 | 937 | 1295 | 1652 | 2010 | 2368 | 2726 | 3083 | 3441 | 3799 | 36       |

## OPTIONAL EQUIPMENT

**BELTING:** Black PVC ruff-top; 3-ply brown neoprene ruff-top; PVC-120 white food grade COS; PVC-150 black COS; 3-ply CN 40 urethane cover. Consult factory for other belting.

**CENTER DRIVE:** Reversible drive with integral belt take-up of 24". Specify location. Center drive option available on units 6'-0" long and above.

**SIDE MOUNTED END DRIVE: OVERHEAD END DRIVE:** Provides minimum conveyor height of 8" TOB (4" dia. drive pulley); 10" TOB (8" dia. drive pulley).

**BELT SPEED:** Constant speed 10-120 FPM; DC variable speed; AC inverter variable speed. Other constant or variable speeds available.

**NOTE: CAPACITY CHANGES WITH SPEED.**

**AUXILIARY TAKE-UP:** Provides 24" of belt take-up. Specify location. See Power Accessories.

**UNDERTRUSSED BED:** Available to provide clearance underneath unit at bed joint locations. Specify location for undertrussing and desired clearance underneath unit. Consult factory.

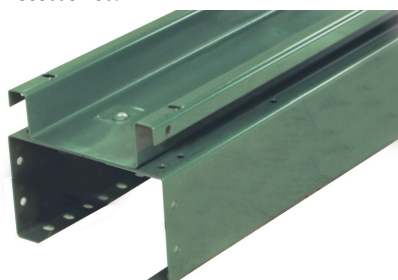
**MOTORS:** Available through 3 HP in TEFC, explosion proof, dirty duty, brake motor, 115/230/1, 575/3, etc.

**FLOOR SUPPORTS:** Supports, knee braces, casters and polytier supports available. See Conveyor Accessories.

**CEILING HANGERS:** 5/8" dia. threaded rod with hardware to attach rods to conveyor. Provides 6' clearance between ceiling and TOB (furnished in place of floor supports). See Conveyor Accessories.

**GUARD RAILS:** Available in 2", 4" and 6" heights (model FSG) to attach to troughed frame to increase trough depth. See Conveyor Accessories.

**ELECTRICAL CONTROLS:** Magnetic starter (one direction or reversible); One direction manual starter; Momentary start/stop push button station; Forward/reversing /stop push button station. Mounting and pre-wiring for units up to 12' long.



DETAIL OF INTERMEDIATE BED SECTION



OPTIONAL OVERHEAD MOUNTED DRIVE



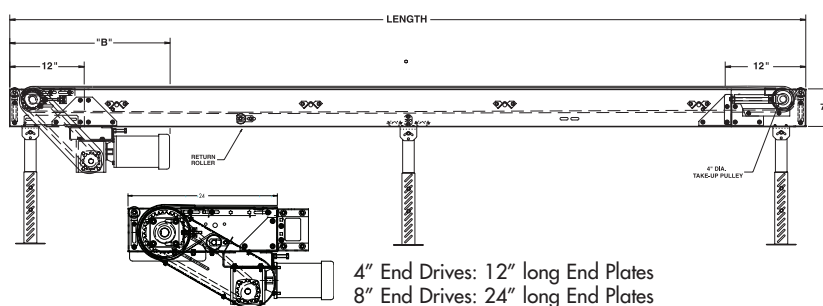
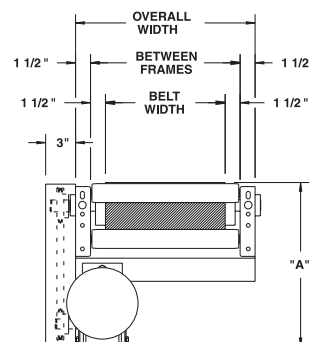
# MODEL 700SB MEDIUM DUTY SLIDER BED BELT CONVEYOR

24 HOUR SHIPMENTS INCLUDE ALL 1-FOOT INCREMENTS 5'-0" TO 100'-0"



Conveyor shown with optional supports

Slider bed belt conveyors remain the most popular of all powered conveyors, providing an economical means of transporting goods for packing, testing, inspecting and various assembly line operations



4" End Drives: 12" long End Plates  
8" End Drives: 24" long End Plates

| HP @<br>60 FPM | "A" MAX |         | "B" MAX   |           |
|----------------|---------|---------|-----------|-----------|
|                | 4" DRV. | 8" DRV. | 4" DRV.   | 8" DRV.   |
| 1/3            | 16-5/8" | 16-5/8" | 27-3/32"  | 33-3/32"  |
| 1/2            | 16-5/8" | 16-5/8" | 27-3/32"  | 33-3/32"  |
| 3/4            | 17"     | 17"     | 27-23/32" | 33-23/32" |
| 1              | 17-1/4" | 17-1/4" | 28-15/32" | 34-15/32" |
| 1-1/2          | 18-1/8" | 18-1/8" | 31-3/32"  | 37-3/32"  |
| 2              | 19"     | 19"     | 32-3/32"  | 38-3/32"  |

## SPECIFICATIONS

**BELTING:** PVC-120 black.

**DRIVE PULLEY:** 4" dia. with 1-3/16" dia. shaft or 8" dia. with 1-7/16" dia. shaft, both machine crowned and fully lagged.

**TAIL PULLEY:** 4" dia., machine crowned, with 1-3/16" dia. shaft.

**END DRIVE:** Allows one-direction (unit) operation; add optional center drive for reversible application.

**TAKE-UP:** Screw type unit at tail pulley provides 12" belt take-up.

**SAFETY POP-OUT ROLLER:** Standard on both ends, 1.9" dia. x 16 ga. steel roller, model 196S.

**BEARINGS:** All pulley bearings are precision, heavy duty, lubricated, ball bearing units with cast iron housings.

**BED:** 7" x 1-1/2" x 12 ga. channel frame with 14 ga. slider bed.

**BELT SPEED:** 60 FPM, constant.

**MOTOR DRIVE:** 1/3 HP, 230/460/3, 60 cycle, ODP right angle gear motor.

**ROLLER CHAIN:** Drive pulley is driven by No. 50 roller chain for 1-1/2 HP or less and No. 60 chain on larger drives. Chain take-up provided on motor base.

**RETURN ROLLERS:** 1.9" dia. x 16 ga. steel, model 196S, adjustable.

**ELECTRICAL CONTROLS:** Optional.

## ⚠ WARNING

Prevent pinch points that exist when belt conveyors are permanently attached to other conveyors or equipment!



## SPECIFICATION TABLE

50'-0" lengths and under are equipped with 4" dia. drive pulley; over 50'-0" includes 8" dia. drive pulley

■ 24 hour shipment ■ 2 week shipment

| CONVEYOR LENGTH |     | 10'                 | 20' | 30'  | 40'  | 50'  | 60'  | 70'  | 80'  | 90'  | 100' | DEDUCT   |
|-----------------|-----|---------------------|-----|------|------|------|------|------|------|------|------|----------|
| BELT            | BED | UNIT WEIGHTS (lbs.) |     |      |      |      |      |      |      |      |      | PER FOOT |
| 6"              | 9"  | 260                 | 389 | 518  | 647  | 776  | 904  | 1033 | 1162 | 1291 | 1420 | 13       |
| 12"             | 15" | 315                 | 482 | 650  | 818  | 986  | 1154 | 1322 | 1490 | 1657 | 1825 | 17       |
| 18"             | 21" | 369                 | 576 | 783  | 990  | 1196 | 1403 | 1610 | 1817 | 2024 | 2230 | 21       |
| 24"             | 27" | 424                 | 670 | 915  | 1161 | 1407 | 1653 | 1898 | 2144 | 2390 | 2636 | 25       |
| 30"             | 33" | 478                 | 763 | 1048 | 1333 | 1617 | 1902 | 2187 | 2471 | 2756 | 3041 | 29       |
| 36"             | 39" | 533                 | 857 | 1180 | 1504 | 1828 | 2151 | 2475 | 2799 | 3122 | 3446 | 32       |

## OPTIONAL EQUIPMENT

**BELTING:** Black PVC ruff-top; 3-ply brown neoprene ruff-top; PVC-120 white food grade COS; PVC-150 black COS; 3-ply CN 40 urethane cover. Consult factory for other belting.

**CENTER DRIVE:** Reversible drive with integral belt take-up of 24". Specify location. Center drive option available on units 6'-0" long and above.

**SIDE MOUNTED END DRIVE:** Provides minimum conveyor height of 10" TOB (4" dia. drive pulley); 12" TOB (8" dia. drive pulley).

**OVERHEAD END DRIVE:** Provides minimum conveyor height of 8" TOB (4" dia. drive pulley); 10" TOB (8" dia. drive pulley).

**NOSE-OVER:** Provides smooth transition from incline to horizontal position. Single nose-over adjusts 0-20°; double nose-over adjusts 0-35°. Feeders also available. See Power Accessories.

**AUXILIARY TAKE-UP:** Provides 24" of belt take-up. Specify location. See Power Accessories.

**SIDE TABLES:** Available in 9", 15" and 21" widths (14 ga.) one or both sides. See Power Accessories.

**UNDERTRUSSED BED:** Available to provide clearance underneath unit at bed joint locations. Specify location for undertrussing and desired clearance underneath unit. Consult factory.

**CEILING HANGERS:** 5/8" dia. threaded rod with hardware to attach rods to conveyor. Provides 6' clearance between ceiling and TOB (furnished in place of floor supports). See Conveyor Accessories.

**BELT SPEED:** Constant speed 10-120 FPM; DC variable speed; AC inverter variable speed. Other constant or variable speeds available.

**NOTE: CAPACITY CHANGES WITH SPEED.**

**FLOOR SUPPORTS:** Supports, knee braces, casters and polytier supports available. See Conveyor Accessories.

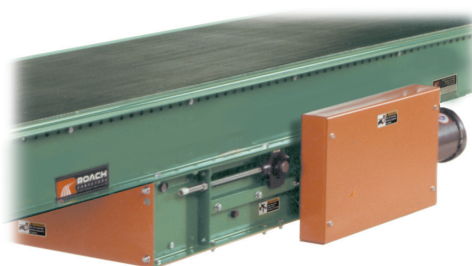
**GUARD RAILS:** 1-3/4" x 1" formed channel (model GC), adjusts horizontally to 10" wider than belt and vertically to 6" above belt; formed steel fixed (model FSG in 2", 4", 6", 8", 12", and 18" heights; fixed channel (model FC); 1-1/2" angle (model GA1-1/2). See Conveyor Accessories.

**MOTORS:** Available through 3 HP in TEFC, explosion proof, dirty duty, brake motor, 115/230/1, 575/3, etc.

**ELECTRICAL CONTROLS:** Magnetic starter (one direction or reversible); One direction manual starter; Momentary start/stop push button station; Forward/reversing /stop push button station. Mounting and pre-wiring for units up to 12' long.



OPTIONAL DC VARIABLE SPEED CONTROLLER



OPTIONAL CENTER DRIVE



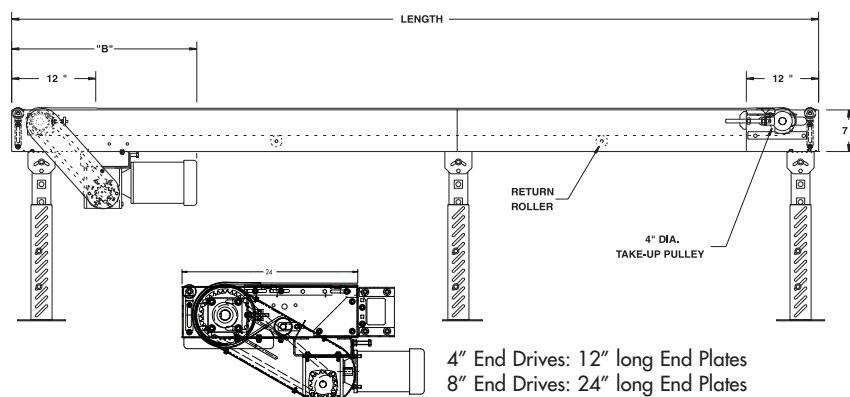
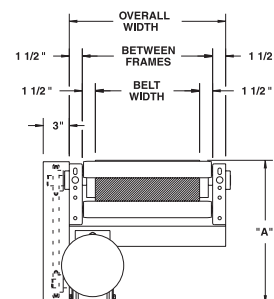
# MODEL 700BSB MEDIUM DUTY BOX STYLE SLIDER BED BELT CONVEYOR

24 HOUR SHIPMENTS INCLUDE ALL 1-FOOT INCREMENTS 5'-0" TO 100'-0"



Conveyor shown with optional supports

Model 700BSB features a box style slider bed which offers a smooth work surface, ideal for workers stationed beside this conveyor. The 700BSB is an economical choice for tasks such as packing, testing and inspecting.



| HP @<br>60 FPM | "A" MAX |         | "B" MAX   |           |
|----------------|---------|---------|-----------|-----------|
|                | 4" DRV. | 8" DRV. | 4" DRV.   | 8" DRV.   |
| 1/3            | 16-5/8" | 16-5/8" | 27-3/32"  | 33-3/32"  |
| 1/2            | 16-5/8" | 16-5/8" | 27-3/32"  | 33-3/32"  |
| 3/4            | 17"     | 17"     | 27-23/32" | 33-23/32" |
| 1              | 17-1/4" | 17-1/4" | 28-15/32" | 34-15/32" |
| 1-1/2          | 18-1/8" | 18-1/8" | 31-3/32"  | 37-3/32"  |
| 2              | 19"     | 19"     | 32-3/32"  | 38-3/32"  |

4" End Drives: 12" long End Plates  
8" End Drives: 24" long End Plates

## SPECIFICATIONS

**BELTING:** PVC-120 black.

**DRIVE PULLEY:** 4" dia. with 1-3/16" dia. shaft or 8" dia. with 1-7/16" dia. shaft, both machine crowned and fully lagged.

**TAIL PULLEY:** 4" dia., machine crowned, with 1-3/16" dia. shaft.

**END DRIVE:** Allows one-direction (unit) operation; add optional center drive for reversible application.

**SAFETY POP-OUT ROLLER:** Standard on both ends, 1.9" dia. x 16 ga. steel roller, model 196S.

**TAKE-UP:** Screw type unit at tail pulley provides 12" belt take-up.

**BED:** 7" deep x 12 ga. box type construction.

**BEARINGS:** All pulley bearings are precision, heavy duty, lubricated, ball bearing units with cast iron housings.

**RETURN ROLLERS:** 1.9" dia. x 16 ga. steel, model 196S, adjustable.

**MOTOR DRIVE:** 1/3 HP, 230/460/3, 60 cycle, ODP right angle gear motor.

**ROLLER CHAIN:** Drive pulley is driven by No. 50 roller chain for 1-1/2 HP or less and No. 60 chain on larger drives. Chain take-up provided on motor base.

**BELT SPEED:** 60 FPM, constant.

**ELECTRICAL CONTROLS:** Optional.

## ⚠ WARNING

Prevent pinch points that exist when belt conveyors are permanently attached to other conveyors or equipment!



## SPECIFICATION TABLE

■ 24 hour shipment ■ 2 week shipment

50'-0" lengths and under are equipped with 4" dia. drive pulley; over 50'-0" includes 8" dia. drive pulley

| CONVEYOR LENGTH |     | 10'                 | 20' | 30'  | 40'  | 50'  | 60'  | 70'  | 80'  | 90'  | 100' | DEDUCT   |
|-----------------|-----|---------------------|-----|------|------|------|------|------|------|------|------|----------|
| BELT            | BED | UNIT WEIGHTS (lbs.) |     |      |      |      |      |      |      |      |      | PER FOOT |
| 6"              | 9"  | 267                 | 391 | 515  | 640  | 764  | 888  | 1012 | 1137 | 1261 | 1385 | 12       |
| 12"             | 15" | 325                 | 497 | 669  | 840  | 1012 | 1183 | 1355 | 1527 | 1698 | 1870 | 17       |
| 18"             | 21" | 384                 | 603 | 822  | 1041 | 1260 | 1479 | 1698 | 1917 | 2136 | 2355 | 22       |
| 24"             | 27" | 442                 | 709 | 975  | 1241 | 1508 | 1774 | 2040 | 2307 | 2573 | 2839 | 27       |
| 30"             | 33" | 501                 | 814 | 1128 | 1442 | 1756 | 2069 | 2383 | 2697 | 3010 | 3324 | 31       |
| 36"             | 39" | 559                 | 920 | 1281 | 1642 | 2003 | 2365 | 2726 | 3087 | 3448 | 3809 | 36       |

## OPTIONAL EQUIPMENT

**BELTING:** Black PVC ruff-top; 3-ply brown neoprene ruff-top; PVC-120 white food grade COS; PVC-150 black COS; 3-ply CN 40 urethane cover. Consult factory for other belting.

**CENTER DRIVE:** Reversible drive with integral belt take-up of 24". Specify location. Center drive option available on units 6'-0" long and above.

**SIDE MOUNTED END DRIVE:** Provides minimum conveyor height of 10" TOB (4" dia. drive pulley); 12" TOB (8" dia. drive pulley).

**OVERHEAD END DRIVE:** Provides minimum conveyor height of 8" TOB (4" dia. drive pulley); 10" TOB (8" dia. drive pulley).

**AUXILIARY TAKE-UP:** Provides 24" of belt take-up. Specify location. See Power Accessories.

**NOSE-OVER:** Provides smooth transition from incline to horizontal position. Single nose-over adjusts 0-20°; double nose-over adjusts 0-35°. Feeders also available. See Power Accessories.

**UNDERTRUSSED BED:** Available to provide clearance underneath unit at bed joint locations. Specify location for undertrussing and desired clearance underneath unit. Consult factory.

**SIDE TABLES:** Available in 9", 15" and 21" widths (14 ga.) one or both sides. See Power Accessories.

**FLOOR SUPPORTS:** Supports, knee braces, casters and polytier supports available. See Conveyor Accessories.

**CEILING HANGERS:** 5/8" dia. threaded rod with hardware to attach rods to conveyor. Provides 6' clearance between ceiling and TOB (furnished in place of floor supports). See Conveyor Accessories.

**GUARD RAILS:** 1-3/4" x 1" formed channel (model GC), adjusts horizontally to 10" wider than belt and vertically to 6" above belt; formed steel fixed (model FSG in 2", 4", 6", 8", 12", and 18" heights; fixed channel (model FC); 1-1/2" angle (model GA1-1/2). See Conveyor Accessories.

**BELT SPEED:** Constant speed 10-120 FPM; DC variable speed; AC inverter variable speed. Other constant or variable speeds available.

**NOTE: CAPACITY CHANGES WITH SPEED.**

**MOTORS:** Available through 3 HP in TEFC, explosion proof, dirty duty, brake motor, 115/230/1, 575/3, etc.

**ELECTRICAL CONTROLS:** Magnetic starter (one direction or reversible); One direction manual starter; Momentary start/stop push button station; Forward/reversing /stop push button station. Mounting and pre-wiring for units up to 12' long.



OPTIONAL CENTER DRIVE

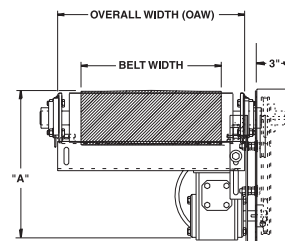


# MODEL 450BOS BOX STYLE SLIDER BED BELT CONVEYOR W/ ROUND END PLATES

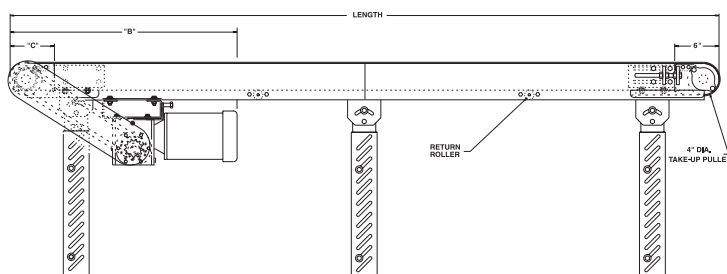
24 HOUR SHIPMENTS INCLUDE ALL 1-FOOT INCREMENTS 5'-0" TO 100'-0"



Conveyor shown with optional supports



Model 450BOS slider bed belt conveyor is one of the most popular and common means of transporting goods for packing, testing, inspecting and a variety of assembly line operations. 450BOS features a box style slider bed, ideal for workers stationed alongside the conveyor.



| HP@<br>60 FPM | "A" MAX   |           | "B" MAX   |           |
|---------------|-----------|-----------|-----------|-----------|
|               | 4" DRV.   | 8" DRV.   | 4" DRV.   | 8" DRV.   |
| 1/3           | 13-13/16" | 13-13/16" | 29-3/32"  | 32-3/32"  |
| 1/2           | 13-13/16" | 13-13/16" | 29-3/32"  | 32-3/32"  |
| 3/4           | 14-3/16"  | 14-3/16"  | 29-23/32" | 32-23/32" |
| 1             | 14-1/2"   | 14-1/2"   | 30-15/32" | 33-15/32" |
| 1-1/2         | 15-9/16"  | 15-9/16"  | 32-19/32" | 35-19/32" |
| 2             | 16-7/16"  | 16-7/16"  | 33-19/32" | 36-19/32" |

## SPECIFICATIONS

**BELTING:** PVC-120 black.

**DRIVE PULLEY:** 4" dia. with 1-3/16" dia. shaft or 8" dia. with 1-7/16" dia. shaft, both machine crowned and fully lagged, mounted in round style end plates.

**TAIL PULLEY:** 4" dia., machine crowned, with 1-3/16" dia. shaft, mounted in round style end plates.

**END DRIVE:** Allows one-direction (unit) operation; add optional center drive for reversible application.

**TAKE-UP:** Belt take-up provided at tail pulley with screw type unit.

**BELT SPEED:** 60 FPM, constant.

**BED:** 4-1/2" deep x 12 ga. box type construction with bed pan braces (30" OAW and above) and round style end plates.

**BEARINGS:** All pulley bearings are precision, heavy duty, lubricated, ball bearing units with cast iron housings.

**RETURN ROLLERS:** 1.9" dia. x 16 ga. steel, model 196S, adjustable.

**MOTOR DRIVE:** 1/3 HP, 230/460/3, 60 cycle, ODP right angle gear motor.

**ROLLER CHAIN:** Drive pulley is driven by No. 50 roller chain for 1-1/2 HP or less and No. 60 chain on larger drives. Chain take-up provided on motor base.

**ELECTRICAL CONTROLS:** Optional.

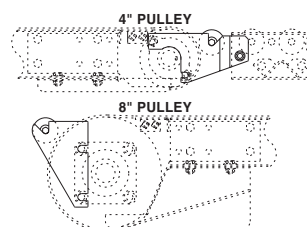
## SPECIFICATIONS

**CONSTRUCTION:** Brackets are 10 ga. HRS painted steel and bolt at end of powered conveyor to butt couplings. Gravity conveyor attaches to connector bracket.

**POP-OUT ROLLERS:** Mounts into slot on bracket for safety design. Use of connector bracket eliminates dangerous pinch points.

## CBOS-4-24

CBOS-(pulley diameter\*)-(overall width)



## ⚠ WARNING

Prevent pinch points that exist when belt conveyors are permanently attached to other conveyors or equipment! Use connector brackets with safety pop out rollers shown above.



**SPECIFICATION TABLE**

50'-0" lengths and under are equipped with 4" dia. drive pulley; over 50'-0" includes 8" dia. drive pulley

■ 24 hour shipment ■ 2 week shipment

| CONVEYOR LENGTH |     | 10'                 | 20' | 30'  | 40'  | 50'  | 60'  | 70'  | 80'  | 90'  | 100' | DEDUCT   |
|-----------------|-----|---------------------|-----|------|------|------|------|------|------|------|------|----------|
| BELT            | BED | UNIT WEIGHTS (lbs.) |     |      |      |      |      |      |      |      |      | PER FOOT |
| 6"              | 10" | 203                 | 295 | 387  | 479  | 571  | 663  | 755  | 847  | 939  | 1031 | 9        |
| 12"             | 16" | 263                 | 395 | 528  | 660  | 793  | 925  | 1058 | 1190 | 1323 | 1455 | 13       |
| 18"             | 22" | 323                 | 496 | 669  | 842  | 1015 | 1188 | 1361 | 1534 | 1706 | 1879 | 17       |
| 24"             | 28" | 383                 | 596 | 810  | 1023 | 1237 | 1450 | 1663 | 1877 | 2090 | 2304 | 21       |
| 30"             | 34" | 443                 | 697 | 951  | 1205 | 1458 | 1712 | 1966 | 2220 | 2474 | 2728 | 25       |
| 36"             | 40" | 503                 | 797 | 1092 | 1386 | 1680 | 1975 | 2269 | 2563 | 2858 | 3152 | 29       |

**OPTIONAL EQUIPMENT**

**BELTING:** Black PVC ruff-top; 3-ply brown neoprene ruff-top; PVC-120 white food grade COS; PVC-150 black COS; 3-ply CN 40 urethane cover. Consult factory for other belting.

**CENTER DRIVE:** Reversible drive with integral belt take-up of 24". Specify location. Center drive option available on units 6'-0" long and above.

**SIDE MOUNTED END DRIVE:** Provides minimum conveyor height of 10" TOB (4" dia. drive pulley); 11" TOB (8" dia. drive pulley).

**OVERHEAD END DRIVE:** Provides minimum conveyor height of 6" TOB (4" dia. drive pulley); 10" TOB (8" dia. drive pulley).

**AUXILIARY TAKE-UP:** Provides 24" of belt take-up. Specify location. See Power Accessories.

**SIDE TABLES:** Available in 9", 15" and 21" widths (14 ga.) one or both sides. See Power Accessories.

**FLOOR SUPPORTS:** Supports, knee braces, casters and polytier supports available. See Conveyor Accessories.

**NOSE-OVER:** Provides smooth transition from incline to horizontal position. Single nose-over adjusts 0-20°; double nose-over adjusts 0-35°. See Power Accessories.

**UNDERTRUSSED BED:** Available to provide clearance underneath unit at bed joint locations. Specify location for undertrussing and desired clearance underneath unit. Consult factory.

**CEILING HANGERS:** 5/8" dia. threaded rod with hardware to attach rods to conveyor. Provides 6' clearance between ceiling and TOB (furnished in place of floor supports). See Conveyor Accessories.

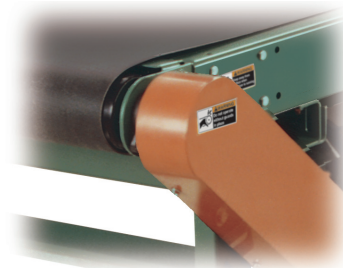
**MOTORS:** Available through 3 HP in TEFC, explosion proof, dirty duty, brake motor, 115/230/1, 575/3, etc.

**GUARD RAILS:** 1-3/4" x 1" formed channel (model GC), adjusts horizontally to 10" wider than belt and vertically to 6" above belt; formed steel fixed (model FSG in 2", 4", 6", 8", 12", and 18" heights; fixed channel (model FC); 1-1/2" angle (model GA1-1/2). See Conveyor Accessories.

**BELT SPEED:** Constant speed 10-120 FPM; DC variable speed; AC inverter variable speed. Other constant or variable speeds available.

**NOTE: CAPACITY CHANGES WITH SPEED.**

**ELECTRICAL CONTROLS:** Magnetic starter (one direction or reversible); One direction manual starter; Momentary start/stop push button station; Forward/reversing /stop push button station. Mounting and pre-wiring for units up to 12' long.



4" END DRIVE WITH ROUND END PLATES





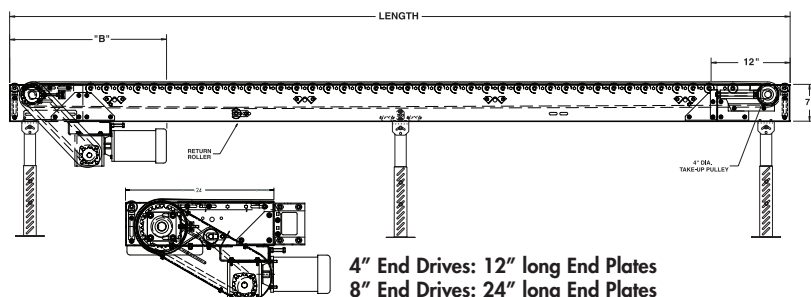
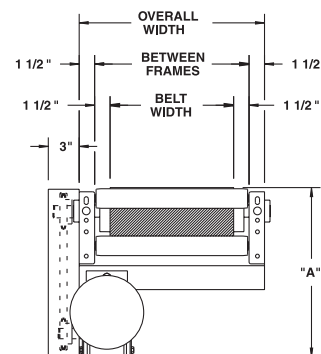
# MODEL 796RB MEDIUM DUTY ROLLER BED BELT CONVEYOR

24 HOUR SHIPMENTS INCLUDE ALL 1-FOOT INCREMENTS 5'-0" TO 100'-0"



Conveyor shown with optional supports

Model 796RB, medium duty roller bed belt conveyor, is well suited for transporting unit loads with lesser horsepower requirements than slider bed belt conveyors.



4" End Drives: 12" long End Plates  
8" End Drives: 24" long End Plates

| HP @<br>60 FPM | "A" MAX |         | "B" MAX   |           |
|----------------|---------|---------|-----------|-----------|
|                | 4" DRV. | 8" DRV. | 4" DRV.   | 8" DRV.   |
| 1/3            | 16-5/8" | 16-5/8" | 27-3/32"  | 33-3/32"  |
| 1/2            | 16-5/8" | 16-5/8" | 27-3/32"  | 33-3/32"  |
| 3/4            | 17"     | 17"     | 27-23/32" | 33-23/32" |
| 1              | 17-1/4" | 17-1/4" | 28-15/32" | 34-15/32" |
| 1-1/2          | 18-1/8" | 18-1/8" | 31-3/32"  | 37-3/32"  |
| 2              | 19"     | 19"     | 32-3/32"  | 38-3/32"  |

## SPECIFICATIONS

**BELTING:** PVC-120 black.

**CARRIER ROLLERS:** 1.9" dia. x 16 ga. steel rollers, model 196S.

**DRIVE PULLEY:** 4" dia. with 1-3/16" dia. shaft or 8" dia. with 1-7/16" dia. shaft, both machine crowned and fully lagged.

**TAIL PULLEY:** 4" dia., machine crowned, with 1-3/16" dia. shaft.

**END DRIVE:** Allows one-direction (unit) operation; add optional center drive for reversible application.

**SAFETY POP-OUT ROLLER:** Standard on both ends, 1.9" dia. x 16 ga. steel roller, model 196S.

**SQUARING RODS:** Adjustable rods on underside of bed allow frame to be squared for improved belt tracking and are standard on all units over 30'.

**BED:** 7" x 1-1/2" x 12 ga. channel frame. Bed sections attached with couplings and floor supports.

**BEARINGS:** All pulley bearings are precision, heavy duty, lubricated, ball bearing units with cast iron housings.

**TAKE-UP:** Screw type unit at tail pulley provides 12" belt take-up.

**BELT SPEED:** 60 FPM, constant.

**RETURN ROLLERS:** 1.9" dia. x 16 ga. steel, model 196S, adjustable.

**ROLLER CHAIN:** Drive pulley is driven by No. 50 roller chain for 1-1/2 HP or less and No. 60 chain on larger drives. Chain take-up provided on motor base.

**MOTOR DRIVE:** 1/3 HP, 230/460/3, 60 cycle, ODP right angle gear motor.

**ELECTRICAL CONTROLS:** Optional.

## ⚠ WARNING

Prevent pinch points that exist when belt conveyors are permanently attached to other conveyors or equipment!



## SPECIFICATION TABLE

50'-0" lengths and under are equipped with 4" dia. drive pulley; over 50'-0" includes 8" dia. drive pulley

■ 24 hour shipment ■ 2 week shipment

| CONVEYOR LENGTH |     |     | 10'   | 20'  | 30'  | 40'  | 50'  | 60'  | 70'  | 80'  | 90'  | 100' | Deduct   |
|-----------------|-----|-----|---|------|------|------|------|------|------|------|------|------|----------|
| BELT            | BF  | OAW | UNIT WEIGHTS (lbs.) with 3" Roller Center (For other centers, deduct weights below) |      |      |      |      |      |      |      |      |      | Per Foot |
| 12"             | 15" | 18" | 346   | 564  | 781  | 999  | 1217 | 1434 | 1652 | 1870 | 2087 | 2305 | 22       |
| 18"             | 21" | 24" | 413   | 683  | 953  | 1223 | 1493 | 1764 | 2034 | 2304 | 2574 | 2845 | 27       |
| 24"             | 27" | 30" | 479   | 802  | 1125 | 1447 | 1770 | 2093 | 2416 | 2739 | 3062 | 3384 | 32       |
| 30"             | 33" | 36" | 546   | 921  | 1296 | 1672 | 2047 | 2422 | 2798 | 3173 | 3549 | 3924 | 38       |
| 36"             | 39" | 42" | 612   | 1040 | 1468 | 1896 | 2324 | 2752 | 3180 | 3608 | 4036 | 4464 | 43       |
| 42"             | 45" | 48" | 679   | 1159 | 1640 | 2120 | 2601 | 3081 | 3562 | 4042 | 4523 | 5003 | 48       |
| 48"             | 51" | 54" | 745   | 1278 | 1811 | 2344 | 2877 | 3411 | 3944 | 4477 | 5010 | 5543 | 53       |

Deduct the following weights (lbs.) for other than 3" centers

| Roller Centers | 12" BELT |         | 18" BELT |         | 24" BELT |         | 30" BELT |         | 36" BELT |         | 42" BELT |         | 48" BELT |         |
|----------------|----------|---------|----------|---------|----------|---------|----------|---------|----------|---------|----------|---------|----------|---------|
|                | Per 5'   | Per 10' | Per 5'   | Per 10' | Per 5'   | Per 10' | Per 5'   | Per 10' | Per 5'   | Per 10' | Per 5'   | Per 10' | Per 5'   | Per 10' |
| 4-1/2"         | -15      | -30     | -20      | -40     | -25      | -50     | -30      | -60     | -35      | -70     | -40      | -80     | -45      | -90     |
| 6"             | -30      | -60     | -40      | -80     | -50      | -100    | -60      | -120    | -70      | -140    | -80      | -160    | -90      | -180    |
| 9"             | -42      | -78     | -56      | -104    | -70      | -130    | -84      | -156    | -98      | -182    | -112     | -208    | -99      | -234    |
| 12"            | -45      | -90     | -60      | -120    | -75      | -150    | -90      | -180    | -105     | -210    | -120     | -240    | -135     | -270    |

## OPTIONAL EQUIPMENT

**BELTING:** Black PVC ruff-top; 3-ply brown neoprene ruff-top; PVC-120 white food grade COS; PVC-150 black COS; 3-ply CN 40 urethane cover. Consult factory for other belting.

**CENTER DRIVE:** Reversible drive with integral belt take-up of 24". Specify location. Center drive option available 6'-0" long units & above.

**SIDE MOUNTED END DRIVE:** Provides minimum conveyor height of 10" TOB (4" dia. drive pulley); 12" TOB (8" dia. drive pulley).

**OVERHEAD END DRIVE:** Provides minimum conveyor height of 8" TOB (4" dia. drive pulley); 10" TOB (8" dia. drive pulley).

**AUXILIARY TAKE-UP:** Provides 24" of belt take-up. Specify location. See Power Accessories.

**SIDE TABLES:** Available in 9", 15" and 21" widths (14 ga.) one or both sides. See Power Accessories.

**FLOOR SUPPORTS:** Supports, knee braces, casters and polytier supports available. See Conveyor Accessories.

**CEILING HANGERS:** 5/8" dia. threaded rod with hardware to attach rods to conveyor. Provides 6' clearance between ceiling and TOB (furnished in place of floor supports). See Conveyor Accessories.

**UNDERTRUSSED BED:** Available to provide clearance underneath unit at bed joint locations. Specify location for undertrussing and desired clearance underneath unit. Consult factory.

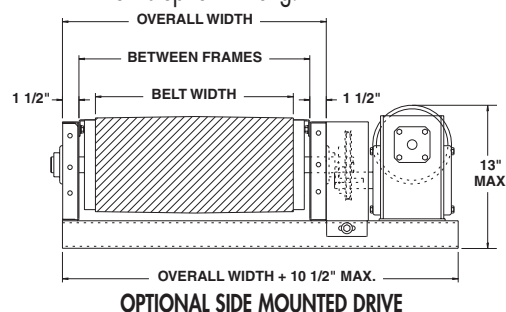
**BELT SPEED:** Constant speed 10-120 FPM; DC variable speed; AC inverter variable speed. Other constant or variable speeds available. **NOTE: CAPACITY CHANGES WITH SPEED.**

**MOTORS:** Available through 3 HP in TEFC, explosion proof, dirty duty, brake motor, 115/230/1, 575/3, etc.

**NOSE-OVER:** Provides smooth transition from incline to horizontal position. Single nose-over adjusts 0-20°; double nose-over adjusts 0-35°. See Power Accessories.

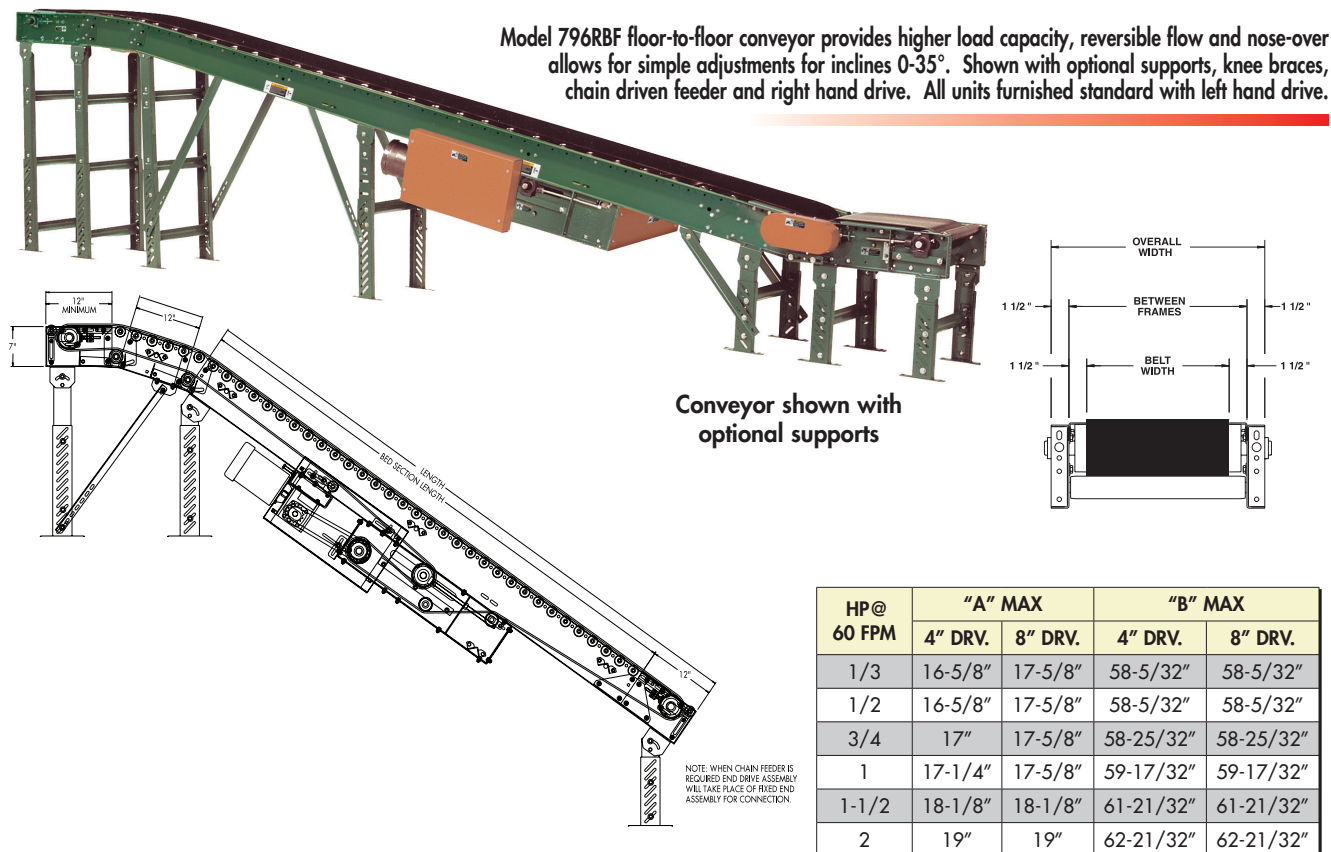
**GUARD RAILS:** 1-3/4" x 1" formed channel (model GC), adjusts horizontally to 10" wider than belt and vertically to 6" above belt; formed steel fixed (model FSG in 2", 4", 6", 8", 12", and 18" heights; fixed channel (model FC); 1-1/2" angle (model GA1-1/2). See Conveyor Accessories.

**ELECTRICAL CONTROLS:** Magnetic starter (one direction or reversible); One direction manual starter; Momentary start/stop push button station; Forward/reversing /stop push button station. Mounting and pre-wiring for units up to 12' long.



# MODEL 796RBF ROLLER BED INCLINED FLOOR-TO-FLOOR BELT CONVEYOR

24 HOUR SHIPMENTS INCLUDE ALL 1-FOOT INCREMENTS 10'-0" TO 50'-0"



## SPECIFICATIONS

**BELTING:** Black PVC ruff-top.

**CARRIER ROLLERS:** 1.9" dia. X 16 ga. steel, model 196S.

**DRIVE PULLEY:** 8" dia. with 1-7/16" dia. shaft, both machine crowned and fully lagged.

**TAIL PULLEY:** 4" dia., machine crowned, with 1-3/16" dia. shaft.

**RETURN ROLLERS:** 1.9" dia. x 16 ga. steel, model 196S, adjustable.

**CENTER DRIVE:** Reversible drive with 24" integral belt take-up.

**SAFETY POP-OUT ROLLER:** Standard on both ends, 1.9" dia. x 16 ga. steel roller, model 196S.

**BELT SPEED:** 60 FPM, constant.

**BED:** 7" x 1-1/2" x 12 ga. channel frame. Bed sections attached with couplings and floor supports.

**NOSE-OVER:** Provides smooth transition from incline to horizontal position. Single nose-over adjusts 0-20°; double nose-over adjusts 0-35° (specify single or double).

**BEARINGS:** All pulley bearings are precision, heavy duty, lubricated, ball bearing units with cast iron housings.

**MOTOR DRIVE:** 1/3 HP, 230/460/3, 60 cycle, ODP right angle gear motor.

**ROLLER CHAIN:** Drive pulley is driven by No. 50 roller chain for 1-1/2 HP or less and No. 60 chain on larger drives. Chain take-up provided on motor base.

**FLOOR SUPPORTS:** Optional.

**ELECTRICAL CONTROLS:** Optional.

## ⚠ WARNING

Prevent pinch points that exist when belt conveyors are permanently attached to other conveyors or equipment!



# SPECIFICATION TABLE

■ 24 hour shipment ■ 2 week shipment

| CONVEYOR LENGTH |     |     | 10'  | 20'  | 30'  | 40'  | 50'  | Deduct   |
|-----------------|-----|-----|--|------|------|------|------|----------|
| BELT            | BF  | OAW | Unit weights (lbs.) with 6" roller centers (For other centers, deduct weights below) |      |      |      |      | Per Foot |
| 12"             | 15" | 18" | 730  | 930  | 1130 | 1331 | 1531 | 22       |
| 18"             | 21" | 24" | 857  | 1111 | 1364 | 1618 | 1872 | 27       |
| 24"             | 27" | 30" | 983  | 1291 | 1598 | 1906 | 2213 | 32       |
| 30"             | 33" | 36" | 1110   | 1471 | 1832 | 2194 | 2555 | 38       |
| 36"             | 39" | 42" | 1237   | 1652 | 2066 | 2481 | 2896 | 43       |
| 42"             | 45" | 48" | 1363   | 1832 | 2300 | 2769 | 3238 | 48       |
| 48"             | 51" | 54" | 1234   | 1776 | 2319 | 2861 | 3403 | 54       |

Deduct the following weights (lbs.) for other than 6" centers

| Roller Centers | 12" BELT |         | 18" BELT |         | 24" BELT |         | 30" BELT |         | 36" BELT |         | 42" BELT |         | 48" BELT |         |
|----------------|----------|---------|----------|---------|----------|---------|----------|---------|----------|---------|----------|---------|----------|---------|
|                | Per 5'   | Per 10' | Per 5'   | Per 10' | Per 5'   | Per 10' | Per 5'   | Per 10' | Per 5'   | Per 10' | Per 5'   | Per 10' | Per 5'   | Per 10' |
| 9"             | -9       | -18     | -12      | -24     | -15      | -30     | -18      | -36     | -21      | -42     | -24      | -48     | -27      | -54     |
| 12"            | -15      | -30     | -20      | -40     | -25      | -50     | -30      | -60     | -35      | -75     | -40      | -80     | -45      | -90     |

## OPTIONAL EQUIPMENT

**BELTING:** 3 ply, brown neoprene ruff-top. Consult factory for other belting.

**SIDE MOUNTED END DRIVE:** Available as option when necessary to move center drive for unit clearance. Minimum horizontal nose-over length required is 3' (2' horizontal may be used if product does not overhang conveyor OAW).

**192S CARRIER ROLLERS:** 1.9" dia. x 12 ga. steel carrier rollers, model 192S, available in model 192RBF.

**UNDERTRUSSED BED:** Available to provide clearance underneath unit at bed joint locations. Specify location for undertrussing and desired clearance underneath unit. Consult factory.

**FLOOR SUPPORTS:** Various height adjustable supports and knee braces available. See Conveyor Accessories.

**POWERED FEEDER:** Integral belt feeder or separate chain driven belt feeder.

**CEILING HANGERS:** 5/8" dia. threaded rod w/ hardware to attach rods (specify rod length) to conveyor. See Conveyor Accessories.

**GUARD RAILS:** 1-3/4" x 1" formed channel (model GC), adjusts horizontally to 10" wider than belt and vertically to 6" above belt; formed steel fixed (model FSG in 2", 4", 6", 8", 12", and 18" heights. See Conveyor Accessories.

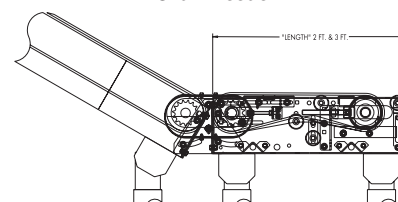
**BELT SPEED:** Constant speed 3-120 FPM; DC variable speed; AC inverter variable speed. Other constant or variable speeds available.

**NOTE: CAPACITY CHANGES WITH SPEED.**

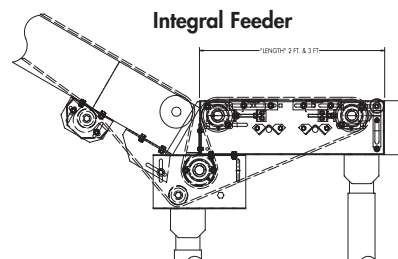
**MOTORS:** Available through 3 HP in TEFC, explosion proof, dirty duty, brake motor, 115/230/1, 575/3, etc.

**ELECTRICAL CONTROLS:** Magnetic starter (one direction or reversible); One direction manual starter; Momentary start/stop push button station; For-ward/reversing/stop push button station.

Chain Feeder



Integral Feeder



OPTIONAL CHAIN DRIVEN FEEDER



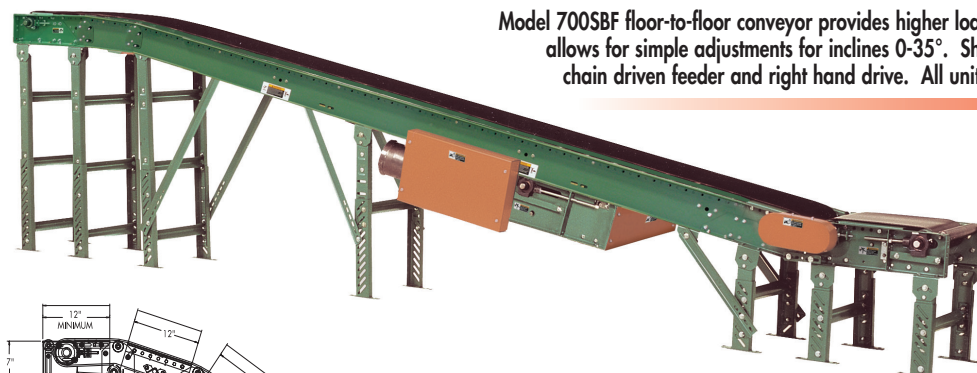
OPTIONAL INTEGRAL FEEDER



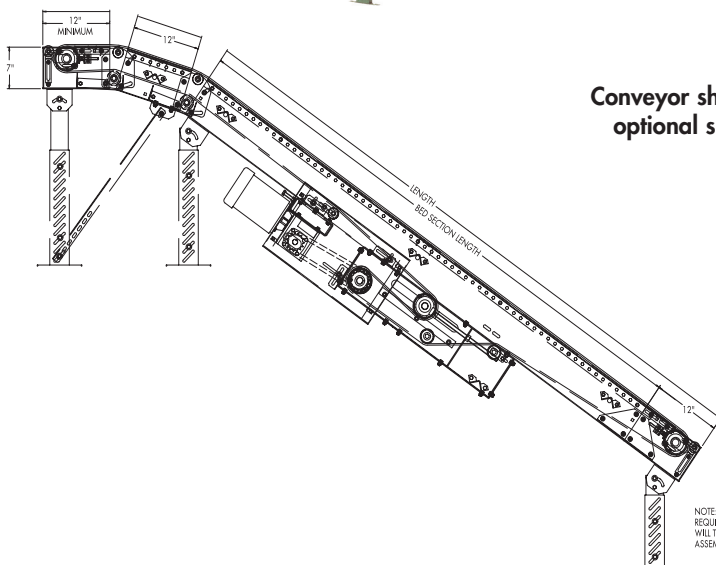


# MODEL 700SBF SLIDER BED INCLINED FLOOR-TO-FLOOR BELT CONVEYOR

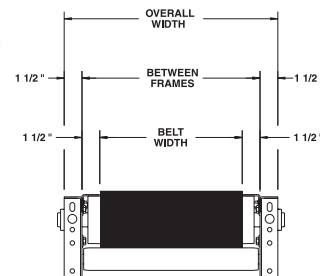
24 HOUR SHIPMENTS INCLUDE ALL 1-FOOT INCREMENTS 10'-0" TO 50'-0"



Model 700SBF floor-to-floor conveyor provides higher load capacity, reversible flow and nose-over allows for simple adjustments for inclines 0-35°. Shown with optional supports, knee braces, chain driven feeder and right hand drive. All units furnished standard with left hand drive.



Conveyor shown with optional supports



| HP@<br>60 FPM | "A" MAX |         | "B" MAX   |           |
|---------------|---------|---------|-----------|-----------|
|               | 4" DRV. | 8" DRV. | 4" DRV.   | 8" DRV.   |
| 1/3           | 16-5/8" | 17-5/8" | 58-5/32"  | 58-5/32"  |
| 1/2           | 16-5/8" | 17-5/8" | 58-5/32"  | 58-5/32"  |
| 3/4           | 17"     | 17-5/8" | 58-25/32" | 58-25/32" |
| 1             | 17-1/4" | 17-5/8" | 59-17/32" | 59-17/32" |
| 1-1/2         | 18-1/8" | 18-1/8" | 61-21/32" | 61-21/32" |
| 2             | 19"     | 19"     | 62-21/32" | 62-21/32" |

NOTE: WHEN CHAIN FEEDER IS REQUIRED END DRIVE ASSEMBLY WILL TAKE PLACE OF FIXED END ASSEMBLY FOR CONNECTION.

## SPECIFICATIONS

**BELTING:** Black PVC ruff-top.

**DRIVE PULLEY:** 8" dia. with 1-7/16" dia. shaft, both machine crowned and fully lagged.

**TAIL PULLEY:** 4" dia., machine crowned, with 1-3/16" dia. shaft.

**RETURN ROLLERS:** 1.9" dia. x 16 ga. steel, model 196S, adjustable.

**CENTER DRIVE:** Reversible drive with 24" integral belt take-up.

**BELT SPEED:** 60 FPM, constant.

**SAFETY POP-OUT ROLLER:** Standard on both ends, 1.9" dia. x 16 ga. steel roller, model 196S.

**NOSE-OVER:** Provides smooth transition from incline to horizontal position. Single nose-over adjusts 0-20°; double nose-over adjusts 0-35° (specify single or double).

**BEARINGS:** All pulley bearings are precision, heavy duty, lubricated, ball bearing units with cast iron housings.

**BED:** 7" x 1-1/2" x 12 ga. channel frame with 14 ga. slider bed 9"-39" BF; 12 ga. slider bed 45" & 51" BF.

**ROLLER CHAIN:** Drive pulley is driven by No. 50 roller chain for 1-1/2 HP or less and No. 60 chain on larger drives. Chain take-up provided on motor base.

**MOTOR DRIVE:** 1/3 HP, 230/460/3, 60 cycle, ODP right angle gear motor.

**FLOOR SUPPORTS:** Optional.

**ELECTRICAL CONTROLS:** Optional.

## ⚠ WARNING

Prevent pinch points that exist when belt conveyors are permanently attached to other conveyors or equipment!



## SPECIFICATION TABLE

■ 24 hour shipment ■ 2 week shipment

| CONVEYOR LENGTH |     |     | 10'                  | 20'  | 30'  | 40'  | 50'  | Deduct   |
|-----------------|-----|-----|----------------------|------|------|------|------|----------|
| BELT            | BF  | OAW | Units weights (lbs.) |      |      |      |      | Per Foot |
| 6"              | 9"  | 12" | 392                  | 506  | 621  | 735  | 849  | 11       |
| 12"             | 15" | 18" | 501                  | 657  | 813  | 969  | 1125 | 16       |
| 18"             | 21" | 24" | 610                  | 808  | 1006 | 1204 | 1402 | 20       |
| 24"             | 27" | 30" | 719                  | 959  | 1199 | 1438 | 1678 | 24       |
| 30"             | 33" | 36" | 828                  | 1110 | 1391 | 1673 | 1955 | 28       |
| 36"             | 39" | 42' | 937                  | 1261 | 1584 | 1908 | 2231 | 32       |

## OPTIONAL EQUIPMENT

**BELTING:** 3 ply, brown neoprene ruff-top. Consult factory for other belting.

**SIDE MOUNTED END DRIVE:** Available as option when necessary to move center drive for unit clearance. Minimum horizontal nose-over length required is 3' (2' horizontal may be used if product does not overhang conveyor OAW).

**BED:** Available in boxed slider bed.

**UNDERTRUSSED BED:** Available to provide clearance underneath unit at bed joint locations. Specify location for undertrussing and desired clearance underneath unit. Consult factory.

**FLOOR SUPPORTS:** Various height adjustable supports and knee braces available. See Conveyor Accessories.

**POWERED FEEDER:** Integral belt feeder or separate chain driven belt feeder.

**MOTORS:** Available through 3 HP in TEFC, explosion proof, dirty duty, brake motor, 115/230/1, 575/3, etc.

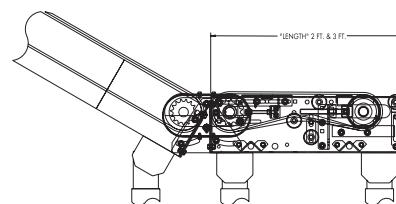
**CEILING HANGERS:** 5/8" dia. threaded rod w/ hardware to attach rods (specify rod length) to conveyor. See Conveyor Accessories.

**GUARD RAILS:** 1-3/4" x 1" formed channel (model GC), adjusts horizontally to 10" wider than belt and vertically to 6" above belt; formed steel fixed (model FSG in 2", 4", 6", 8", 12", and 18" heights. See Conveyor Accessories.

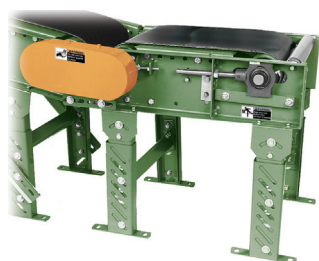
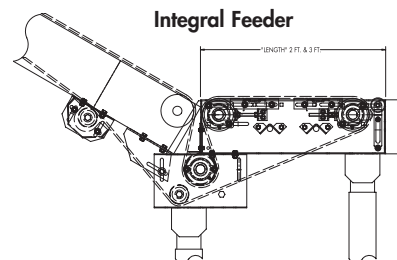
**BELT SPEED:** Constant speed 3-120 FPM; DC variable speed; AC inverter variable speed. Other constant or variable speeds available. **NOTE: CAPACITY CHANGES WITH SPEED.**

**ELECTRICAL CONTROLS:** Magnetic starter (one direction or reversible); One direction manual starter; Momentary start/stop push button station; Forward/reversing/stop push button station.

Chain Feeder



Integral Feeder



OPTIONAL CHAIN DRIVEN FEEDER



OPTIONAL INTEGRAL FEEDER

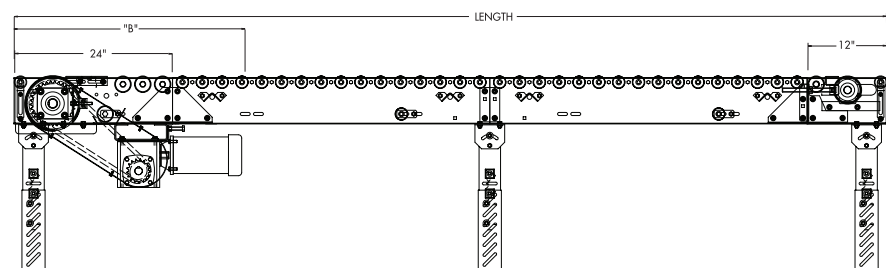
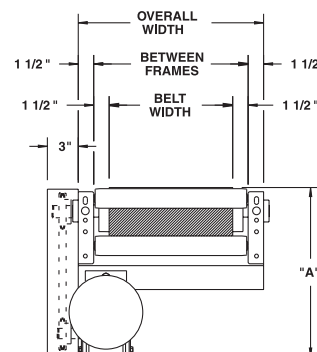
# MODEL 751RB HEAVY DUTY ROLLER BED BELT CONVEYOR

24 HOUR SHIPMENTS INCLUDE ALL 1-FOOT INCREMENTS 5'-0" TO 100'-0"



Conveyor shown with optional supports

Roach 751RB is the choice for heavier unit loads. The heavy duty roller bed construction makes model 751RB ideal for transporting heavy loads with low power requirements.



| HP@<br>60 FPM | "A" MAX<br>8" DRV. | "B" MAX<br>8" DRV. |
|---------------|--------------------|--------------------|
| 1             | 17-1/4"            | 34-15/32"          |
| 1-1/2"        | 18-1/8"            | 37-3/32"           |
| 2             | 19"                | 38-3/32"           |
| 3             | 19-1/2"            | 39-9/32"           |

## SPECIFICATIONS

**BELTING:** PVC-120 black.

**CARRIER ROLLERS:** 2-1/2" dia. x 11 ga. steel, model 251S.

**DRIVE PULLEY:** 8" dia. with 1-7/16" dia. shaft on 15"-39" BF; 12" dia. with 1-15/16" dia. shaft above 39" BF; both machine crowned and fully lagged.

**TAIL PULLEY:** 4" dia. with 1-3/16" dia. shaft on 15"-39" BF; 6" dia. with 1-7/16" dia. shaft above 39" BF; both machine crowned.

**RETURN ROLLERS:** 1.9" dia. x 16 ga. steel, model 196S, adjustable.

**BELT SPEED:** 35 FPM, constant.

**END DRIVE:** Allows one-direction (unit) operation; add optional center drive for reversible application.

**TAKE-UP:** Screw type unit at tail pulley provides 12" belt take-up.

**BEARINGS:** All pulley bearings are precision, heavy duty, lubricated, ball bearing units with cast iron housings.

**BED:** 7" x 1-1/2" x 10 ga. channel frame. Bed sections attach with couplings and floor supports.

**SAFETY POP-OUT ROLLERS:** Standard on both ends, 1.9" x 12 ga. steel, model 192S on 15"-39" BF, 1.9" x 9 ga. steel, model 199S on 45"-57" BF.

**SQUARING RODS:** Adjustable rods on underside of bed allow frame to be squared for improved belt tracking and are standard on all units over 30'.

**ROLLER CHAIN:** Drive pulley is driven by No. 50 roller chain for 1-1/2 HP or less and No. 60 chain on larger drives. Chain take-up provided on motor base.

**MOTOR DRIVE:** 1 HP, 230/460/3, 60 cycle, ODP right angle gear motor.

**ELECTRICAL CONTROLS:** Optional.

### ⚠ WARNING

Prevent pinch points that exist when belt conveyors are permanently attached to other conveyors or equipment!



## SPECIFICATION TABLE

■ 24 hour shipment ■ 3 week shipment

| CONVEYOR LENGTH |     |      | 10'  | 20'  | 30'  | 40'  | 50'  | 60'  | 70'  | 80'  | 90'  | 100'  | Deduct   |
|-----------------|-----|------|--|------|------|------|------|------|------|------|------|-------|----------|
| BF              | OAW | BELT | UNIT WEIGHTS (lbs.) with 6" Roller Centers (For other centers, deduct weights below) |      |      |      |      |      |      |      |      |       | Per Foot |
| 15"             | 18" | 12"  | 499  | 892  | 1285 | 1677 | 2070 | 2463 | 2856 | 3248 | 3641 | 4034  | 39       |
| 21"             | 24" | 18"  | 619  | 1104 | 1588 | 2073 | 2557 | 3042 | 3526 | 4011 | 4495 | 4980  | 49       |
| 27"             | 30" | 24"  | 739  | 1315 | 1892 | 2468 | 3044 | 3620 | 4197 | 4773 | 5349 | 5925  | 57       |
| 33"             | 36" | 30"  | 859  | 1527 | 2193 | 2863 | 3531 | 4199 | 4867 | 5535 | 6203 | 6871  | 67       |
| 39"             | 42" | 36"  | 979  | 1739 | 2499 | 3258 | 4018 | 4778 | 5538 | 6297 | 7057 | 7817  | 76       |
| 45"             | 48" | 42"  | 1099   | 1951 | 2802 | 3654 | 4505 | 5357 | 6208 | 7060 | 7911 | 8763  | 85       |
| 51"             | 54" | 48"  | 1219   | 2162 | 3106 | 4049 | 4992 | 5935 | 6879 | 7822 | 8765 | 9708  | 94       |
| 57"             | 60" | 54"  | 1339   | 2374 | 3409 | 4444 | 5479 | 6514 | 7549 | 8584 | 9619 | 10654 | 104      |

Deduct the following weights (lbs.) for other than 3" centers

| Roller Centers | 15" BF  | 21" BF  | 27" BF  | 33" BF  | 39" BF  | 45" BF  | 51" BF  | 57" BF  |
|----------------|---------|---------|---------|---------|---------|---------|---------|---------|
|                | Per 10' | Per 10' | Per 10' | Per 10' | Per 10' | Per 10' | Per 10' | Per 10' |
| 4-1/2"         | -72     | -90     | -112    | -136    | -158    | -178    | -200    | -220    |
| 6"             | -144    | -180    | -224    | -272    | -316    | -356    | -400    | -440    |
| 9"             | -186    | -234    | -300    | -354    | -410    | -464    | -518    | -572    |
| 12"            | -216    | -270    | -336    | -408    | -474    | -534    | -600    | -660    |

## OPTIONAL EQUIPMENT

**BELTING:** Black PVC ruff-top; 3-ply brown neoprene ruff-top; PVC-120 white food grade COS; PVC-150 black COS; 3-ply CN 40 urethane cover. Consult factory for other belting.

**CENTER DRIVE:** Reversible drive with integral belt take-up of 24". Specify location. Center drive option available on units 6'-0" long and above.

**SIDE MOUNTED END DRIVE:** Provides minimum conveyor height of 12" TOB (8" dia. drive pulley); 16" TOB (12" dia. drive pulley).

**OVERHEAD END DRIVE:** Provides minimum conveyor height of 12" TOB (8" dia. drive pulley); 16" TOB (12" dia. drive pulley).

**AUXILIARY TAKE-UP:** Provides 24" of belt take-up. Specify location. See Power Accessories.

**FLOOR SUPPORTS:** Supports, knee braces, casters and polytier supports available. See Conveyor Accessories.

**GUARD RAILS:** HFSG in 2", 4" and 6" heights; 1-1/2" angle (model HGA1-1/2). See Conveyor Accessories.

**NOSE-OVER:** Provides smooth transition from incline to horizontal position. Consult factory.

**SIDE TABLES:** Available in 9", 15" and 21" widths. Consult factory.

**BELT SPEED:** Constant speed 12-120 FPM; DC variable speed; AC inverter variable speed. Other constant or variable speeds available.

**NOTE: CAPACITY CHANGES WITH SPEED.**

**CEILING HANGERS:** Heavy duty with hardware to attach rods to conveyor. Consult factory.

**MOTORS:** Available through 3 HP in TEFC, explosion proof, dirty duty, brake motor, 115/230/1, 575/3, etc.

**ELECTRICAL CONTROLS:** Magnetic starter (one direction or reversible); One direction manual starter; Momentary start/stop push button station; Forward/reversing /stop push button station. Mounting and pre-wiring for units up to 12' long.

